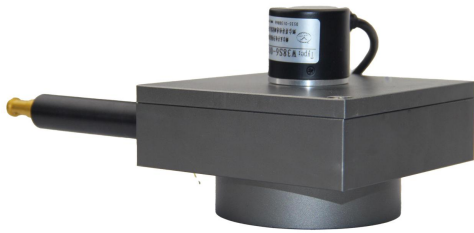


Draw Wire Encoder

Mini Size: 147x147x130mm;
Measurement Range:0-10000mm;

GI-D120 Series



- ▶ Size: 147x147x130mm;
- ▶ Measurement Range: 0-10000mm;
- ▶ Supply Voltage:5v,8-29v;
- ▶ Output Format: **Analog**-0-10v, 4-20mA;
Incremental:NPN/PNP open collector, Push pull, Line Driver;
Absolute:Biss, SSI, Modbus, CANopen, Profibus-DP, Profinet, EtherCAT, Parallel etc.
- ▶ Widely used in various fields of automatic control and measurement system,such as machinery manufacturing, shipping, textile, printing, aviation, military industry Testing machine, elevator, etc.
- ▶ Vibration-resistant, corrosion-resistant, pollution-resistant;

Product characteristics

Size:	147x147x130mm
Measurement Range:	0-10000mm;

Electrical Data

Output Format:	Analog: 0-10v, 4-20mA; Incremental:NPN/PNP open collector, Push pull, Line Driver; Absolute:Biss, SSI, Modbus, CANopen, Profibus-DP, Profinet, EtherCAT, Parallel etc.
Insulation resistance	Min 1000 Ω
Power	2W
Supply Voltage:	5v,8-29v

Mechanical Data

Accuracy	0.2%
Linear Tolerance	±0.1%
Wire Rope Dia.	0.8mm
Pull	5N
Pulling Speed	Max.300mm/s
Working Life	Min.60000h
Case Material	Metal
Cable Length	1m 2m or as per requested

Environment Data

Working Temp.	-25~80℃
Storage Temp.	-30~80℃
Protection Grade	IP54

Dimensions

